

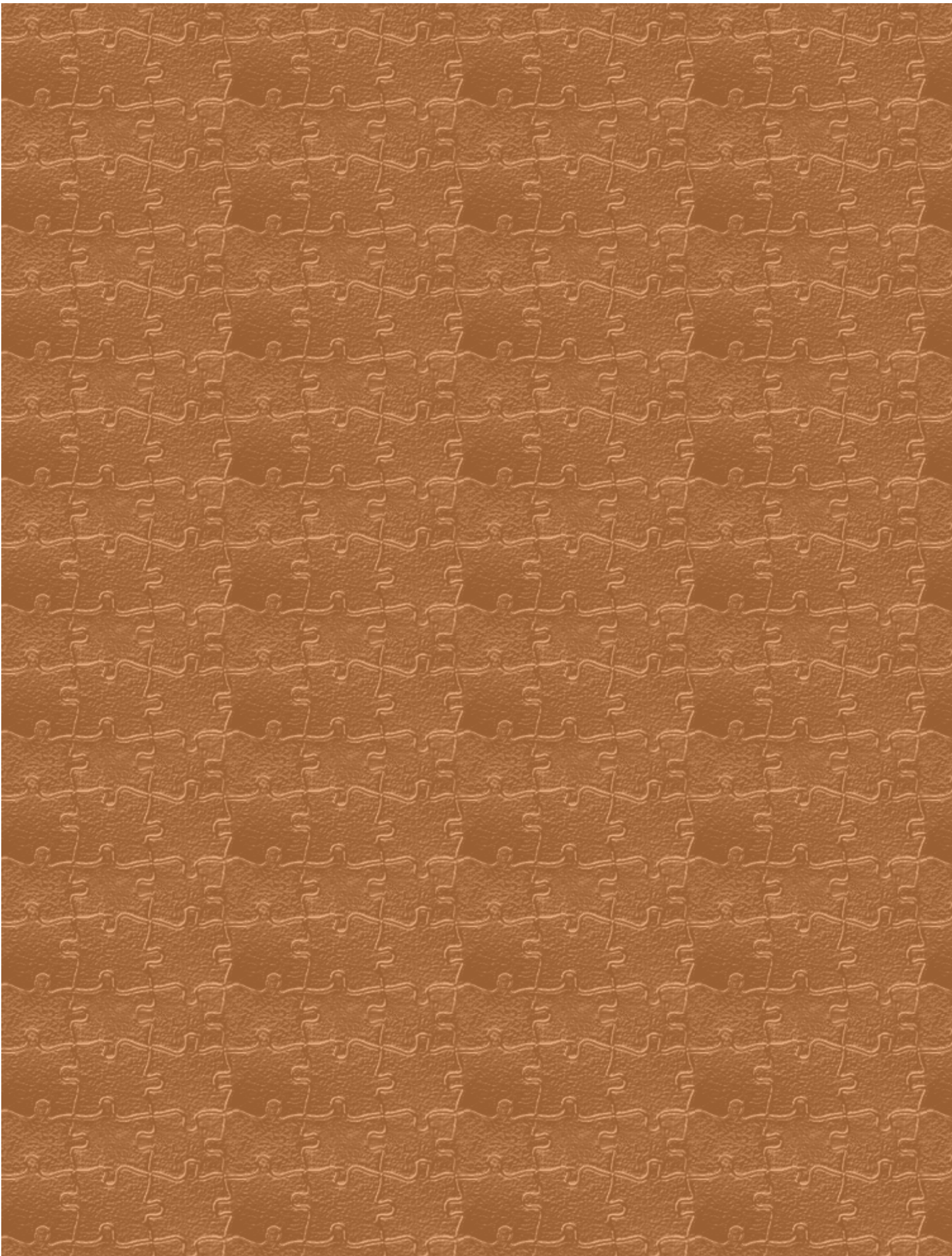
## COMMANDER RALPH'S



## ARCHIMEDES STOMACHION PUZZLE



THE OLDEST PUZZLE OF THE WORLD  
PROVED IN WRITING!



**The history of the puzzle is estimated to be 2200 years old, tracing its roots back to the Ancient Greece and the third century B.C.**

**An ingenious inventor Archimedes of Syracuse  
(287 B.C. - 212 B.C.)**



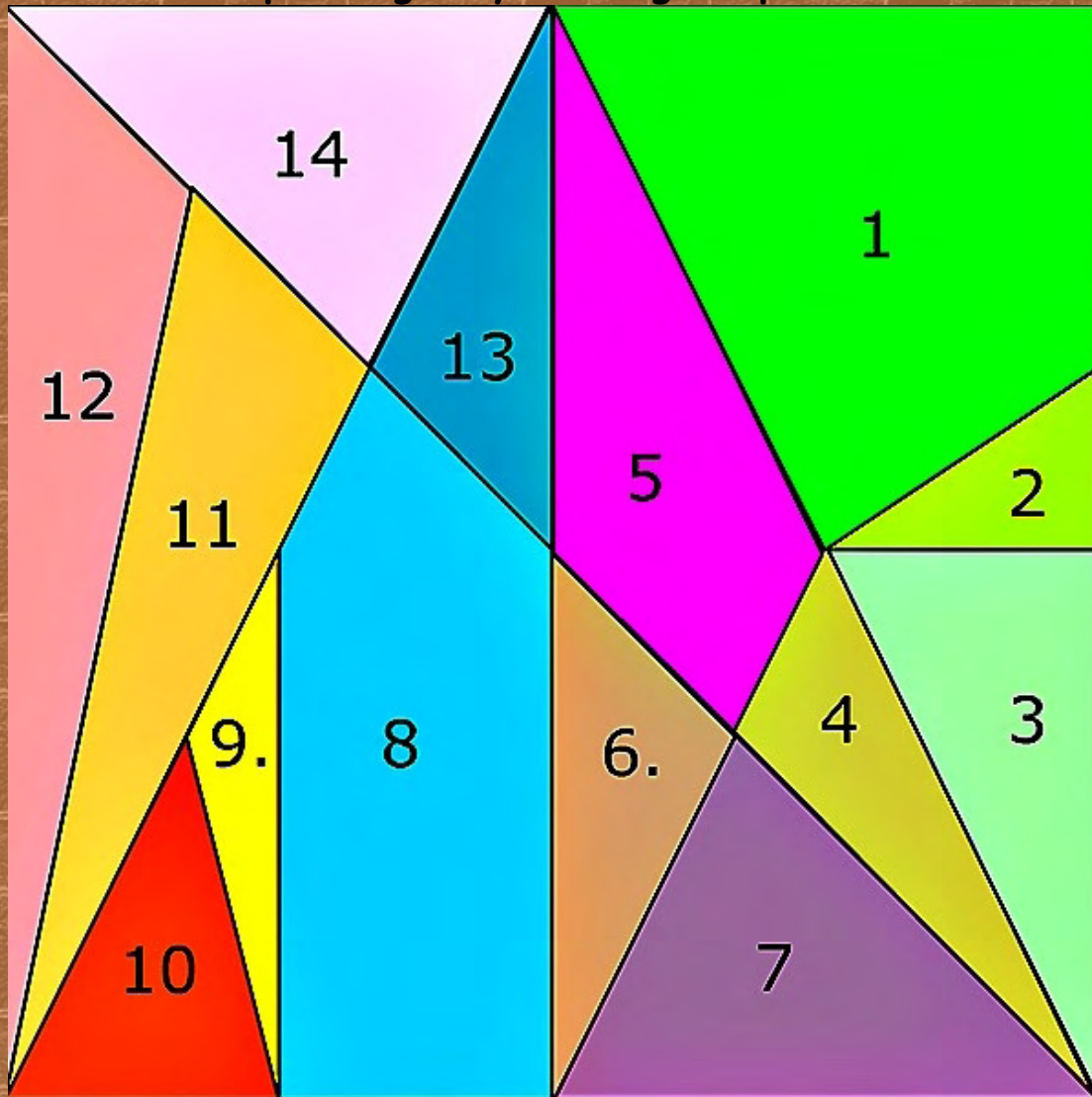
**is often credited with creating of the puzzle.**

**Even one of the other names for the puzzle is  
"The Loculus of Archimedes."**

**Unfortunately, today it is not known for sure if he  
invented the puzzle or just explored the geometrical  
aspects of it.**

**The puzzle was discovered accidentally, in 1846, but  
then again lay in obscurity for over a century.**

The puzzle consists of 14 pieces of various polygonal shapes originally forming a square.

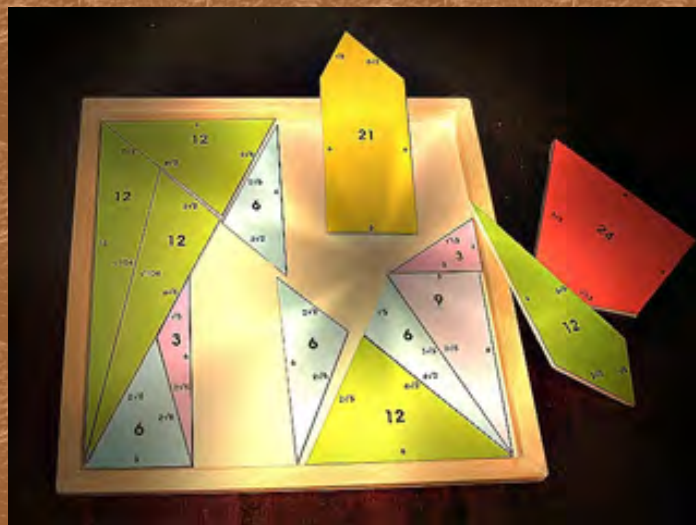


The object of the puzzle is to rearrange the pieces to form interesting shapes.

*BUT.....there's a catch!*

The *RULE* of the game is that *ALL* 14 pieces must be used in forming each figure and therein lies the puzzle part of it, particularly if you start out with a given object to construct.

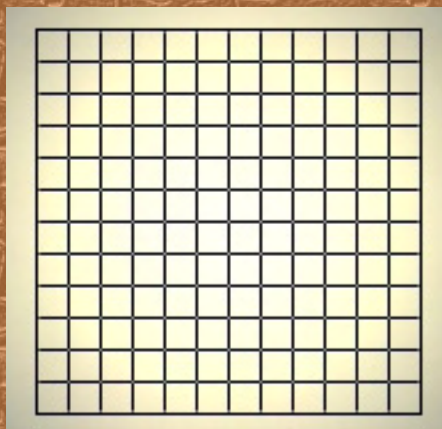
*Didn't think it was going to be that easy did you?*



So how do you make your own *Stomachion*?  
*Simple!*

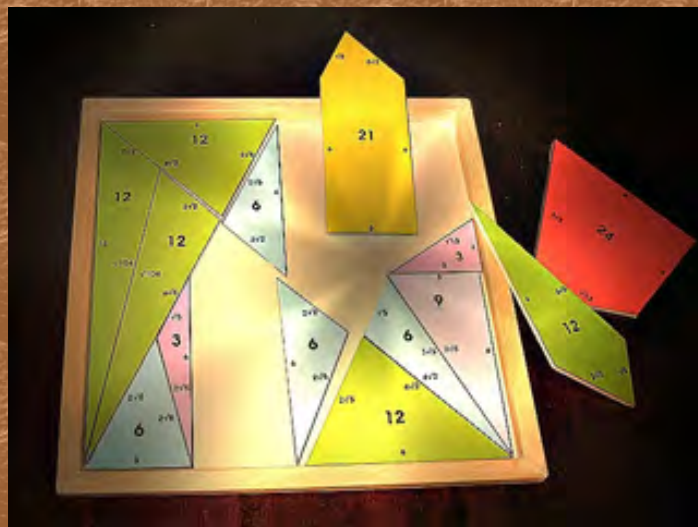
Anyone can make a Stomachion  
You can make it out of anything you like.  
You can even print out the sample at the end.

Start with a square  
containing a uniform 12 x 12 grid.

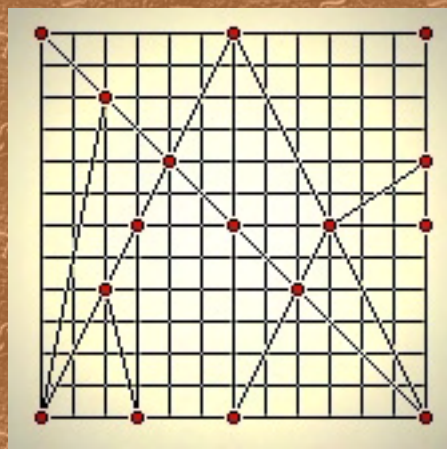


The intersections of the grid lines are called lattice points.

Take each small square to have a unit, so that the original square has an area of 144.



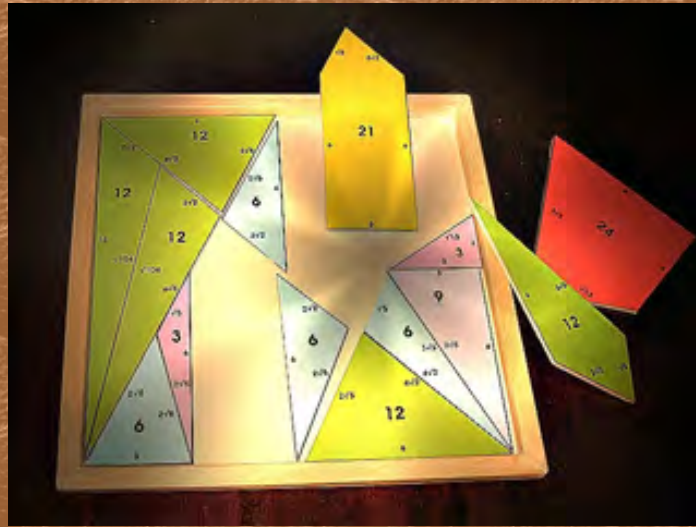
Draw lines through the indicated lattice points.



The lines divide the square into 14 three-, four-, and five-sided polygons.

These polygons are called lattice polygons because their vertices are at lattice points.

The lattice polygons form the 14 pieces of the Stomachion.



**So what can you make?**

**You can attempt to place an elephant, a flying goose, a wild bear, a hunter, a dog, a tower, a pot, and a gladiator with net and helmet.**

**With the stomachion you can form nearly every known design all you need to do is use your imagination!**

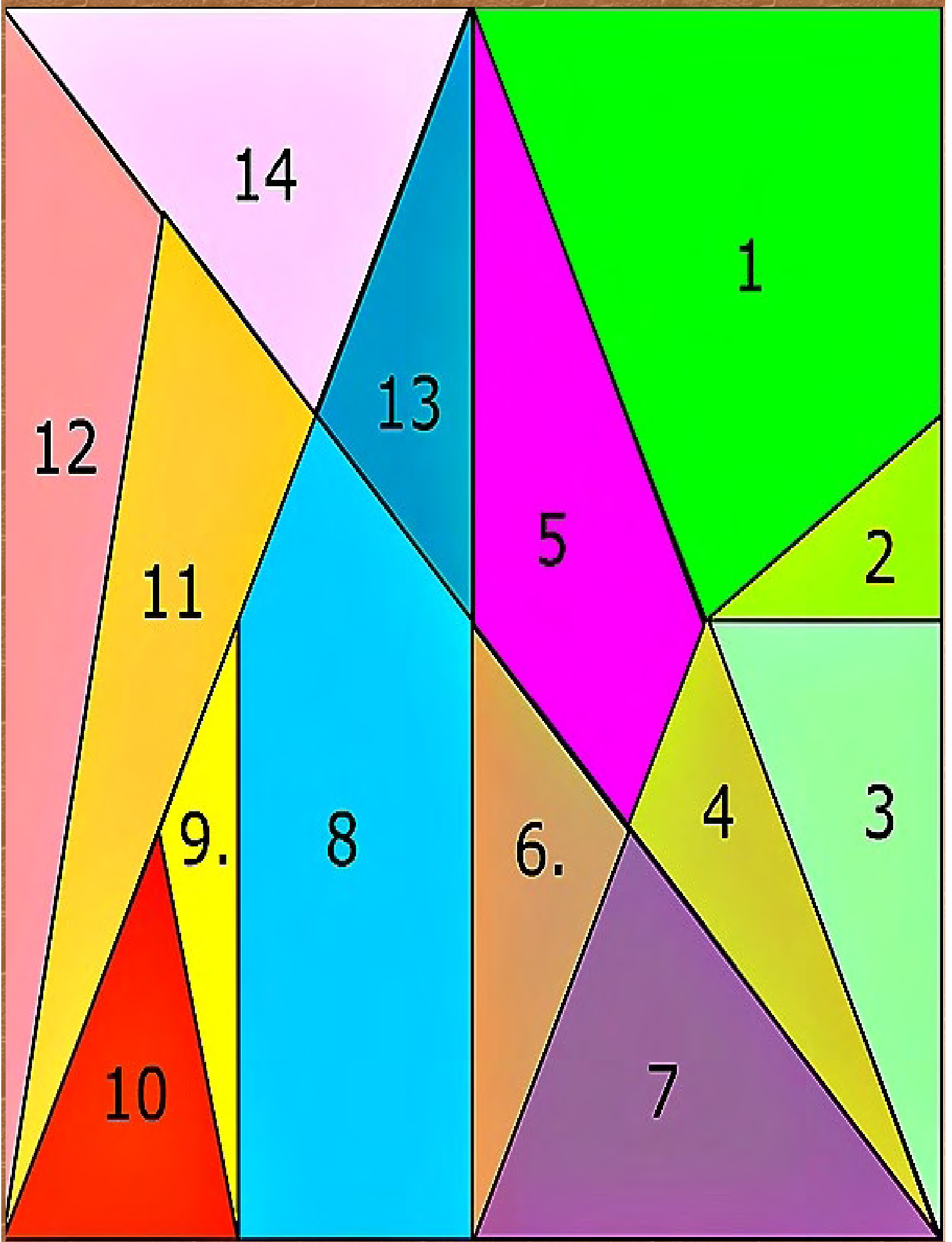
**With practice, it's surprising how skillful you can become in accurately fitting the 14 pieces into really kool designs!**

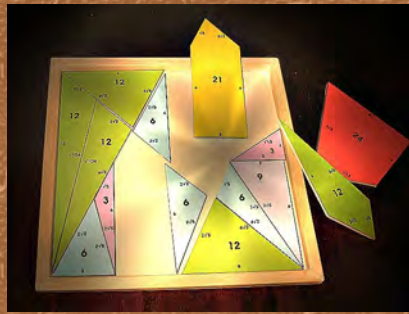












**As you can see there is no end to what you can do!**

**My puzzle twister is at an end.....**

***but***

**my adventures have no beginning and no end!**

**COMMANDER RALPH.....signing off!**

**See you on my next adventure!**

**[www.cptbootsiesmagictimemachine.com/](http://www.cptbootsiesmagictimemachine.com/)**

